

# CONNAUGHT HOUSE - W1

---

1-3 Mount Street, Mayfair

---

# Newly refurbished and fitted, fourth floor office in prestigious Mayfair, W1.

A setting that inspires confidence, creativity and success. Proudly positioned on the north side of Mayfair's iconic Berkeley Square, this prestigious location combines elegance with modern business convenience at a competitive price point.





# SPECIFICATION



Newly  
refurbished



Fully fitted



Recently  
remodelled  
reception



Excellent  
natural light



Plasterboard  
ceiling with inset  
LED lights



Air  
conditioning



Concierge



Passenger  
Lifts x2

RECEPTION





# 4TH FLOOR

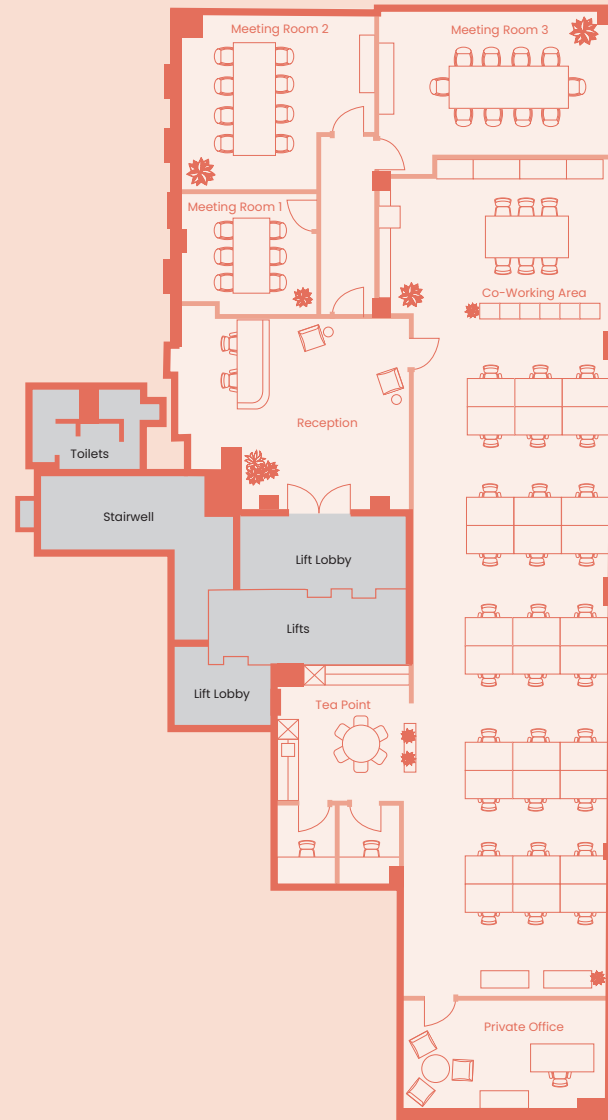
3,368 sq ft  
312.9 sqm

3 meeting rooms

Private Office

2 x Phone Booths

Co-Working/Printer Station



— MOUNTROW —

DAVIES STREET

— MOUNT STREET —

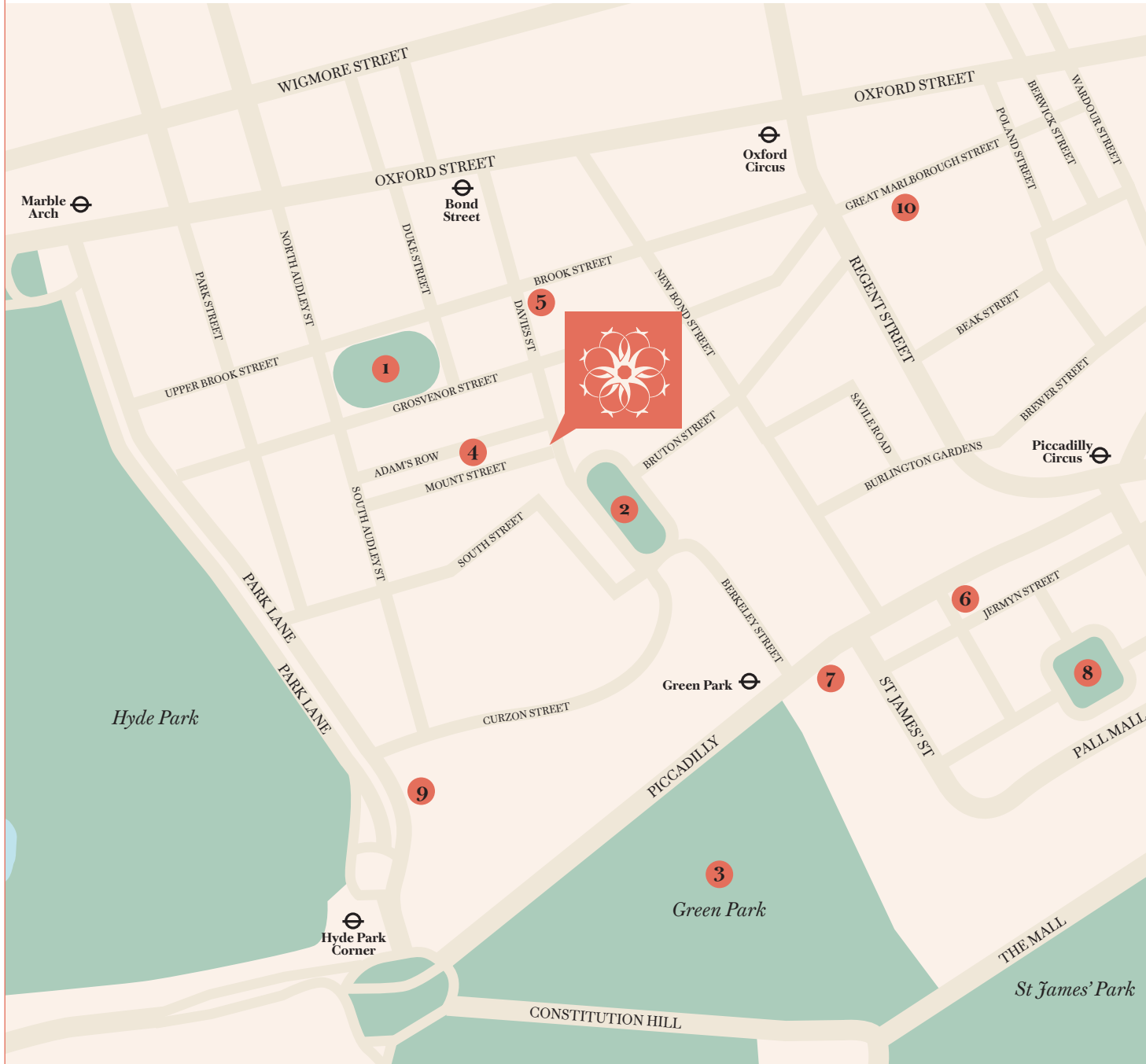
@ LOCATION



# MAYFAIR W1



# LOCATION



- 1 Grosvenor Square
- 2 Berkeley Square
- 3 Green Park
- 4 The Connaught
- 5 Claridge's
- 6 Fortnum & Mason
- 7 The Ritz London
- 8 St James's Square
- 9 Hilton on Park Lane
- 10 Liberty London



# Food & Drink

Surrounded by world-class restaurants, luxury boutiques, and five-star hotels. From Scott's, Sexy Fish, and Bacchanalia to The Connaught, Claridge's, and Mount St. Restaurant, the neighbourhood is alive with world-class culinary energy. Here, tradition and innovation sit side by side - the perfect environment for tastemakers and entrepreneurs who value heritage, quality, and creative excellence.

## RESTAURANTS

**Bacchanalia**  
1 Mount Street

---

**Mount St. Restaurant**  
41-43 Mount Street

---

**Gymkhana**  
42 Albemarle Street

---

**Sexy Fish Mayfair**  
Berkeley Square

---

**The Wolseley**  
160 Piccadilly

---

**The Ritz Restaurant**  
150 Piccadilly

---

**Ormer Mayfair**  
Half Moon Street

---

**Hélène Darroze**  
The Connaught

---

**El Pirata of Mayfair**  
5-6 Down Street

---

**Kitty Fisher's**  
10 Shepherd Market

---

**The Goat Tavern**  
3-5 Shepherd Market

---

**Ambassadors Clubhouse**  
3-5 Shepherd Market

---

**Maison François**  
36 Duke Street

---



## COFFEE

**HR Higgins**  
79 Duke Street

**Popina**  
83 Duke Street

**Attendant Mayfair**  
55 Duke Street

**Everbean**  
30 Avery Row

**Queens of Mayfair**  
17 Queen Street

**Caffe In**  
3 Shepherd Street

## PUBLIC HOUSES

**The Audley**  
Corner of Mount Street

**The Guinea Grill**  
30 Bruton Place

**The Barley Mow**  
82 Duke Street

**Ye Grapes**  
16 Shepherd Market

**The Punchbowl**  
41 Farm Street





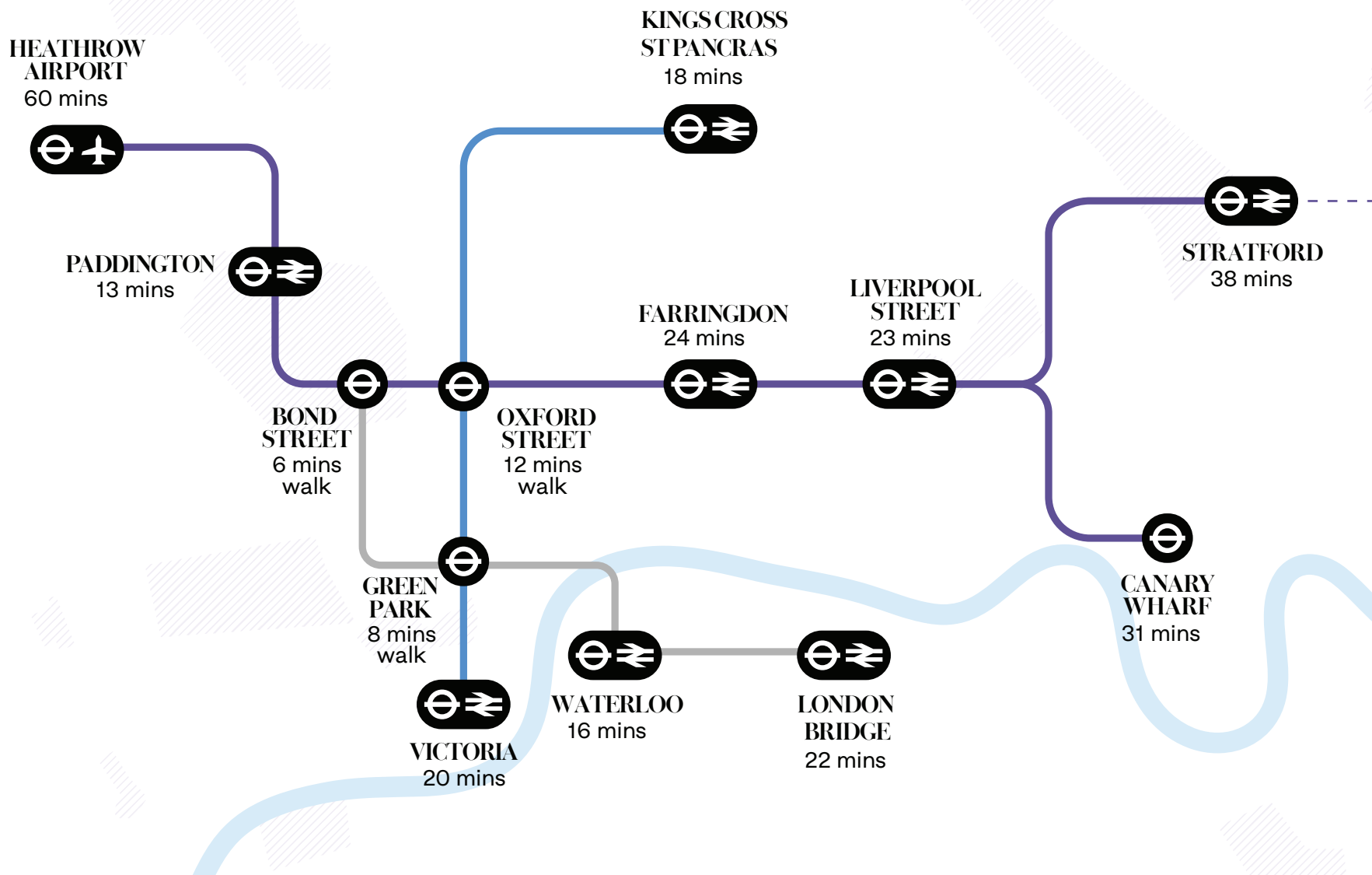
# LUXURY SHOPPING



Surrounded by some of the world's most prestigious names, Connaught House sits at the crossroads of London's luxury retail district. From the designer flagships of Bond Street and Mount Street to bespoke tailors on Savile Row and heritage perfumers on Jermyn Street, this is where global brands and discerning clientele meet. With Selfridges, Fortnum & Mason, and countless independent boutiques just moments away, Mayfair offers a retail landscape as exclusive as its address.

# Φ TRANSPORT

Just moments from Bond Street, Green Park and Oxford Circus stations, Connaught House offers seamless access across London and beyond. The Elizabeth, Jubilee, Central, Victoria and Piccadilly lines place key business districts, from the City to Canary Wharf, within minutes, while direct connections to Heathrow and Paddington make international travel effortless.



Travel times taken from Google Maps from 1 Mount Street to destination and are indicative only



# CONNAUGHT HOUSE – W1

1-3 Mount Street  
Mayfair W1



## Harry Cormack

020 7747 0144  
07815 463 822  
harry.cormack@levyrealestate.co.uk

## Calum Holden

020 7747 0090  
07508 610 454  
calum.holden@levyrealestate.co.uk

## Peter Mather

020 7747 0090  
07923 531 667  
peter.mather@levyrealestate.co.uk

[www.levyrealestate.co.uk](http://www.levyrealestate.co.uk)

# NEWMARK

## Rhodri Phillips

020 3486 3451  
07768 615 296  
rhodri.phillips@nmrk.com

## Felix Harper

020 3486 3756  
07385 479 935  
felix.harper@nmrk.com

## Milly Mitchell

020 3486 3797  
07880 477 227  
milly.mitchell@nmrk.com

[www.nmrk.com](http://www.nmrk.com)