

21-22 Grosvenor Street, London, W1K 4QJ



Office unit available now on the prestigious Grosv...

OFFICE

London | Consultancy | Transactions | Independent | Experienced

Location

This prominent building is situated in the heart of Mayfair on the renowned Grosvenor Street, just moments from both Grosvenor Square and Berkeley Square. A superb range of amenities is available in the immediate vicinity, including iconic retail destinations such as New Bond Street and South Molton Street, as well as prestigious hotels such as Claridge's and The Biltmore, all right on the doorstep. Bond Street (Jubilee & Central Lines) and Oxford Circus (Victoria, Central & Bakerloo Lines) tube stations are also close by, providing the building with excellent transport links.

Transport Links

Bond Street 0.2 miles
Oxford Circus 0.4 miles
Green Park 0.4 miles

Accommodation

The accommodation comprises the following areas:

Name	sq ft	sq m	Availability
2nd - Rear	1,099	102.10	Available
Total	1,099	102.10	

Description

The 2nd floor office unit, comprising 1,099 sq. ft., is situated at the rear of the building and benefits from an abundance of natural light due to floor to ceiling windows surrounding the perimeter of the suite. The floor has been fitted to provide 1 x boardroom, 1 x meeting room, and a kitchenette. In addition, the building benefits from a concierge, passenger lift and access to cycle storage and shower facilities.



Rent

£85 per sq ft

Business rates

Rates Payable £33.35 per sq ft

Service charge

£27.42 per sq ft

EPC

EPC Available upon request

Get in touch

Our offices are located in the heart of London's West End - a short walk from the world-famous Piccadilly Circus. Heddon House, 149-151 Regent St, London, W1B 4JD

+44 20 7930 1070
info@levyrealstate.co.uk



www.levyrealstate.co.uk

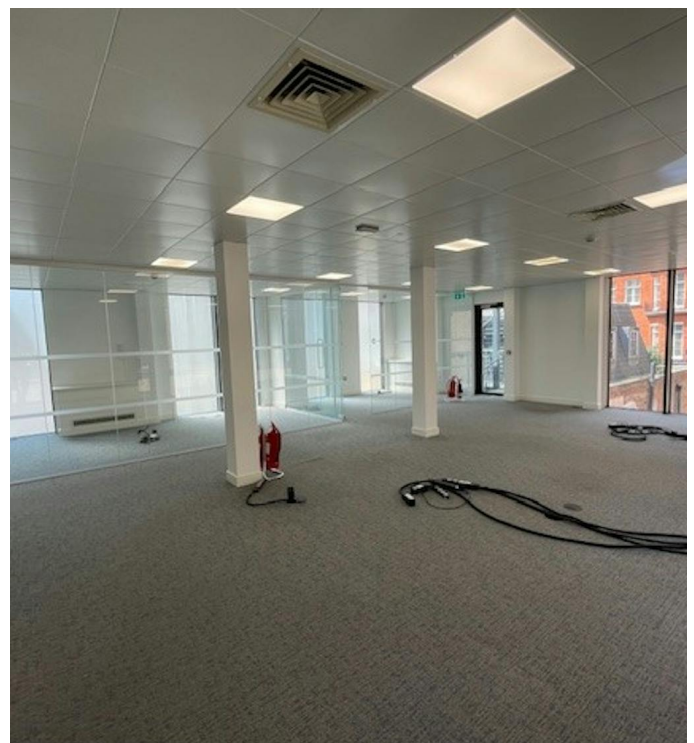
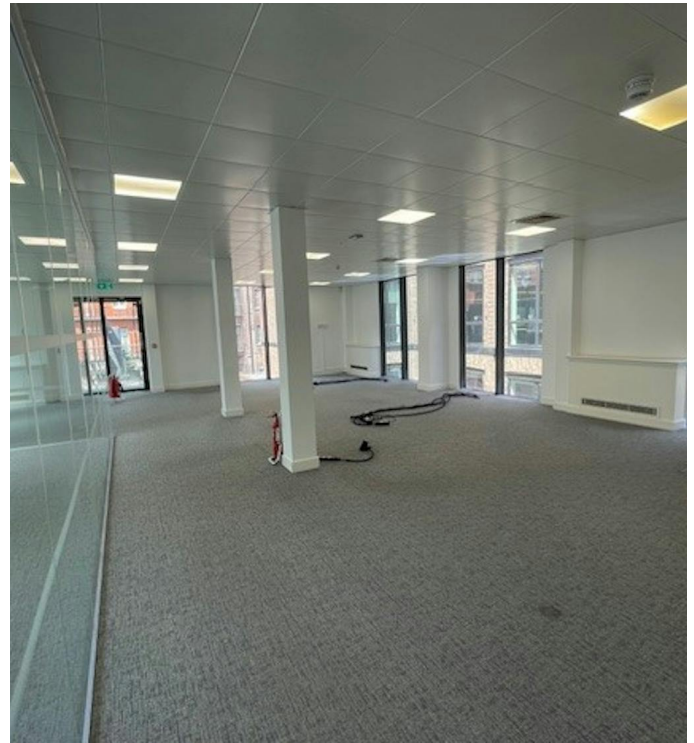
21-22 Grosvenor Street,
London, W1K 4QJ



Office unit available now on the prestigious Grosv...

OFFICE

London | Consultancy | Transactions | Independent | Experienced



Get in touch

Our offices are located in the heart of London's West End - a short walk from the world-famous Piccadilly Circus. Heddon House, 149-151 Regent St, London, W1B 4JD

+44 20 7930 1070
info@levyrealstate.co.uk



www.levyrealstate.co.uk

**21-22 Grosvenor Street,
London, W1K 4QJ**

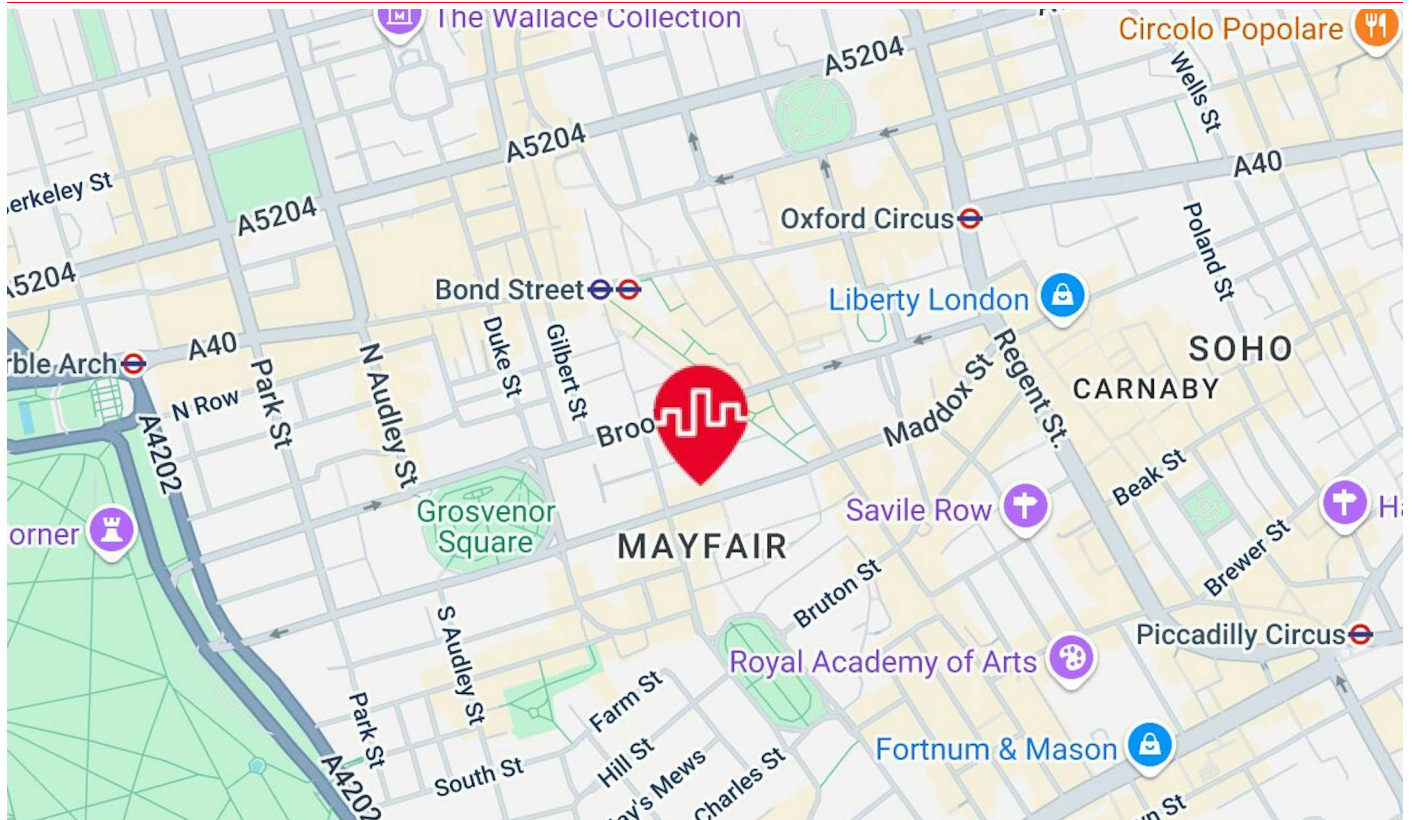


Office unit available now on the prestigious Grosv...

OFFICE

London | Consultancy | Transactions | Independent | Experienced

Location



Further Information

For further information, or to arrange an inspection please contact joint agents:

Contact

Calum Holden

E Calum.Holden@levyrealestate.co.uk

Harry Cormack

T 020 7747 0144

E harry.cormack@levyrealestate.co.uk

MISREPRESENTATION ACT 1967 - Levy Real Estate LLP for themselves and for the Vendors or lessors of this property whose agents they are given notice that: All description, dimensions, reference to condition and necessary permissions for use and occupation and other details are given without responsibility and any intending purchasers or tenants should not rely on them as statements or representations of fact but must satisfy themselves by inspection or otherwise as to the correctness of each of them. Any services mentioned have not been tested and therefore prospective occupiers should satisfy themselves as to their operation. These particulars are produced in good faith and set out a general guide only and do not constitute part of any offer or contract. No person in the employment of Levy Real Estate LLP has any authority to make or give representation or warranty in relation to this property. All prices and rents are quoted exclusive of VAT unless otherwise stated. January 2026

Levy Real Estate LLP
Heddon House, 149-151 Regent St,
London, W1B 4JD

T +44 20 7930 1070

E info@levyrealestate.co.uk

www.levyrealestate.co.uk

