

Unit 5F, Standard Industrial Estate Henley Road, E16 2ES

Available To Let - 1,179 Sq.Ft. Light Industrial Unit



INDUSTRIAL

London | Consultancy | Transactions | Independent | Experienced



Location

Standard Industrial Estate is located at the junction of Henley Road and Pier Road in Silvertown E16. The estate has good road links to the A13/A406 junction approximately two and a half miles to the north and the City of London approximately seven miles to the west. The Woolwich Ferry is approximately a ¼ of a mile to the east of the estate, which is well served by public transport with King George V (DLR Line) and London City Airport Station (DLR Line) both less than ½ a mile away. Numerous bus routes also service the estate.

Description

Standard Industrial Estate comprises a range of recently refurbished, modern industrial/warehouse units, benefiting from parking and loading facilities within a shared service yard. The property itself comprises a modern single storey industrial unit of portal frame construction. The unit has approximately 3m eaves height and benefits from estate parking and loading facilities.

Amenities

- Secure estate parking
- 3 Phase power
- Electric roller shutter
- 3m eaves height
- Gas
- WC Facilities
- 24/7 access

Connectivity

London City Airport	0.5 Miles
King George V	0.3 Miles
Cyprus	0.6 Miles
Beckton Park	0.6 Miles
Royal Albert	0.8 Miles
Canning Town	2.3 Miles

MISREPRESENTATION ACT 1967 - Levy Real Estate LLP for themselves and for the Vendors or lessors of this property whose agents they are given notice that: All description, dimensions, reference to condition and necessary permissions for use and occupation and other details are given without responsibility and any intending purchasers or tenants should not rely on them as statements or representations of fact but must satisfy themselves by inspection or otherwise as to the correctness of each of them. Any services mentioned have not been tested and therefore prospective occupiers should satisfy themselves as to their operation. These particulars are produced in good faith and set out a general guide only and do not constitute part of any offer or contract. No person in the employment of Levy Real Estate LLP has any authority to make or give representation or warranty in relation to this property. All prices and rents are quoted exclusive of VAT unless otherwise stated. October 2024

Levy Real Estate LLP
Heddon House, 149-151
Regent Street
London W1B 4JD

T +44 20 7930 1070
E info@levyrealstate.co.uk

www.levyrealstate.co.uk



Unit 5F, Standard Industrial Estate Henley Road, E16 2ES

Available To Let - 1,179 Sq.Ft. Light Industrial Unit



INDUSTRIAL

London | Consultancy | Transactions | Independent | Experienced

Location Plans

Not to scale, indicative only



Accommodation (GIA)

Description	sq ft	sq m
Unit 5F	1,179	109.37
Total	1,179	109.37

Terms

The property is available by way of a new FRI lease for a term to be agreed.

Rates

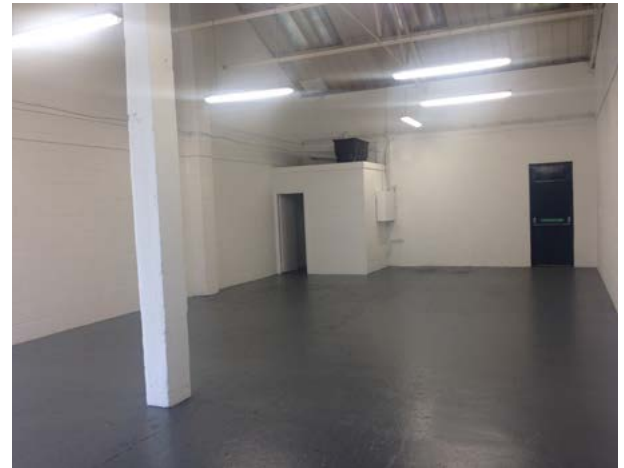
A current rateable value of £15,250.

For all rates related enquiries please contact the London Borough of Newham.

Quoting Rents

Price upon application.

Internal Photo



Further Information

Viewing is strictly by appointment only, through sole agents Levy Real Estate:

Henry Newland
T 020 7747 0116
E henry.newland@levyrealestate.co.uk

MISREPRESENTATION ACT 1967 - Levy Real Estate LLP for themselves and for the Vendors or lessors of this property whose agents they are given notice that: All description, dimensions, reference to condition and necessary permissions for use and occupation and other details are given without responsibility and any intending purchasers or tenants should not rely on them as statements or representations of fact but must satisfy themselves by inspection or otherwise as to the correctness of each of them. Any services mentioned have not been tested and therefore prospective occupiers should satisfy themselves as to their operation. These particulars are produced in good faith and set out a general guide only and do not constitute part of any offer or contract. No person in the employment of Levy Real Estate LLP has any authority to make or give representation or warranty in relation to this property. All prices and rents are quoted exclusive of VAT unless otherwise stated. October 2024

Levy Real Estate LLP
Heddon House, 149-151
Regent Street
London W1B 4JD

T +44 20 7930 1070
E info@levyrealestate.co.uk

www.levyrealestate.co.uk

