



0m 4m 8m 12m 16m
VISUAL SCALE 1:200 @ A1

Information

This drawing is © C4 Projects and is not to be copied, reproduced or re-distributed either in whole or in part without the prior written permission of the originator.

The originator shall have no responsibility for any liability, loss, cost, damage or expense arising from or relating to any use of this document other than for its intended purpose on this project.

This drawing shall be read in conjunction with all other relevant drawings, specifications and associated documentation. Any discrepancies, errors or omissions are to be reported to the originator before proceeding with work.

All dimensions are to be checked on site by the contractor prior to proceeding with any work. This drawing shall not be scaled to ascertain any dimensions, work to figured dimensions only.

DISCLAIMER
When this drawing is issued in CAD, it is an uncontrolled version issued for information only, to enable the recipient to prepare their own documents/drawings for which they are solely responsible.

SOFTWARE INTEROPERABILITY
C4 Projects prepared this drawing using Autodesk REVIT Architecture.

C4 Projects does not accept liability for any loss or degradation of any information held in the drawing resulting from the translation from the original file format to any other file format or from the recipient's reading of it in any other programme.

Hazard Identification		
ref	hazard	date

Proposed Site Area		
Area	Metric	Imperial
	2,005.78 m ²	0.50 acres

DEVELOPMENT KEY

Application boundary

- PROJECT NOTES**
- Construction Issue production information to be used for sub-contractor design to achieve design intent.
 - Development proposals are to be read in conjunction with all referenced drawings and documents.
 - Any proposed ground or floor slab levels are indicative and subject to change to suit Engineered design and/or determined by site conditions.

- REFERENCE DRAWINGS**
- Architectural 20135-C4P-:
- Refer to 01 & 11 Series for Existing Site
 - Refer to 02 Series for Constraints & Hazards
 - Refer to 04 Series for Proposed Masterplan Site
 - Refer to 05 Series for Proposed Site
 - Refer to 07 Series for Site Elevations & Sections
 - Refer to 13 Series for Demolition Plan
 - Refer to 20 Series for Building GA Plans
 - Refer to 21 Series for Building GA Elevations
 - Refer to 22 Series for Building GA Sections
 - Refer to 24 Series for RCPs
 - Refer to 25 Series for Detailed Sections
 - Refer to 26 Series for Wall Detail
 - Refer to 30 Series for Floor Types
 - Refer to 32 Series for Internal Partitions
 - Refer to 34 Series for Stairs, Ramps and Guarding
 - Refer to 40 Series for Windows
 - Refer to 41 Series for Curtain Walling
 - Refer to 44 Series for Door Schedules
 - Refer to 50 Series for Finish Plans
 - Refer to 70 Series for WC's
 - Refer to 82 Series for BREEM
 - Refer to 90 Series for 3D Perspective View

Rev	Revision Details	Drawn	Date	Checked
P12	Drawings Coordinated as Per latest Structural Design	GN	19.12.23	SS
P11	Additional Landscaping	JC	13.10.23	SS
P10	Updated design and Tender Pack	SS	30.08.23	SS
P9	Minor amendments ahead of submission	AR	10.08.23	SS
P8	Updated ahead of NMA application.	AR	28.07.23	SS
P7	Landscaping and site amendments for Planning	AAL	17.02.22	SS
P6	Tender Issue	SS	06.12.21	SS
P5	Drawing correction	SS	07.09.21	SS
P4	Planning & BREEM Issue	AJH	27.07.21	SS
P3	Updated to suit Tracking	AJH	26.07.21	SS
P2	Yard and Front Facade Updated	AJH	22.07.21	SS
P1	Pre-Planning Issue	AR	16.03.21	GE

C4 Projects

340 Fincrest Court
Warrington
WA1 1RG
t: 01925 751 852
e: info@c4projects.co.uk
www.c4projects.co.uk

Project Management • Architecture • Building Surveying • Cost Consultancy

Client
Endureshare Ltd

Project
Plot 1, B2/B8 Warehouse Development
35 Pensbury Place

Drawing Title
Site Plan As Proposed

Status Purpose of Issue
S2 SUITABLE FOR INFORMATION

Drawn by AJH **Created** Jan 21

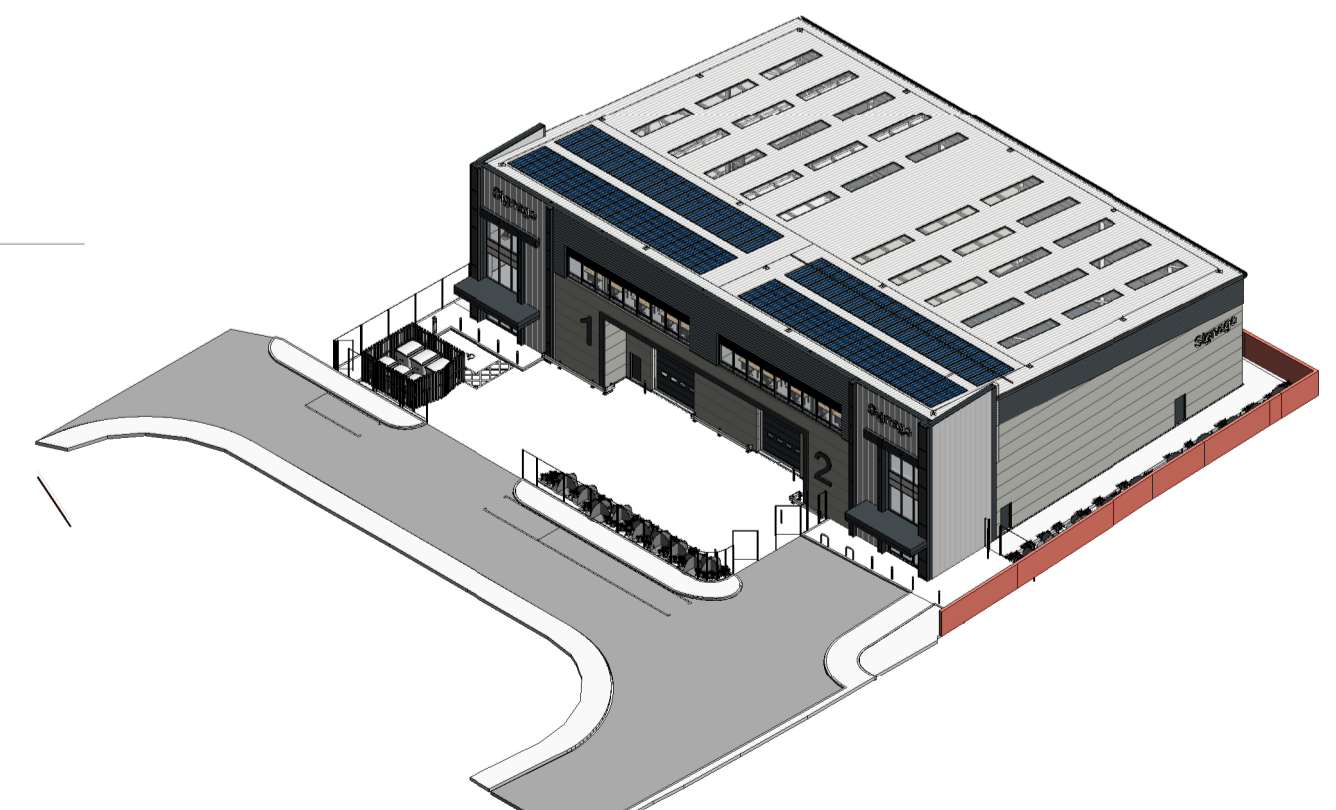
C4 Job no. 20-135 **Scale** As indicated **@** A1

Dwg no.	Rev
20135-C4P-AV-ZZ-DR-A-0500	P12



Highways Works

Proposed kerb removal for revised site entrances subject to Local Authority Highways approval via s.184/s.50/s.278 works (as appropriate)



1 05-ZZ Site Plan Proposed
1 : 200

2 05-ZZ Site Plan as Proposed 3D View