

# AREA PLAN

## PARK ROYAL

10 Cullen Way, LONDON, NW10

### Ground Floor

### IPMS3 Office Area Plan

**IPMS 3**      **908.7 sq m**      **9781 sq ft**

#### LIMITED USE AREAS

The following areas are 'Limited Use' Areas within the TOTAL Area:

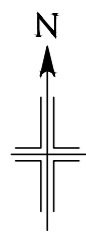
	Structure	4.0 sq m	43 sq ft
	Partition Wall	7.7 sq m	83 sq ft
	Plinth	0.8 sq m	9 sq ft

The following are INCLUSIONS in the IPMS 3 - OFFICE TOTAL:

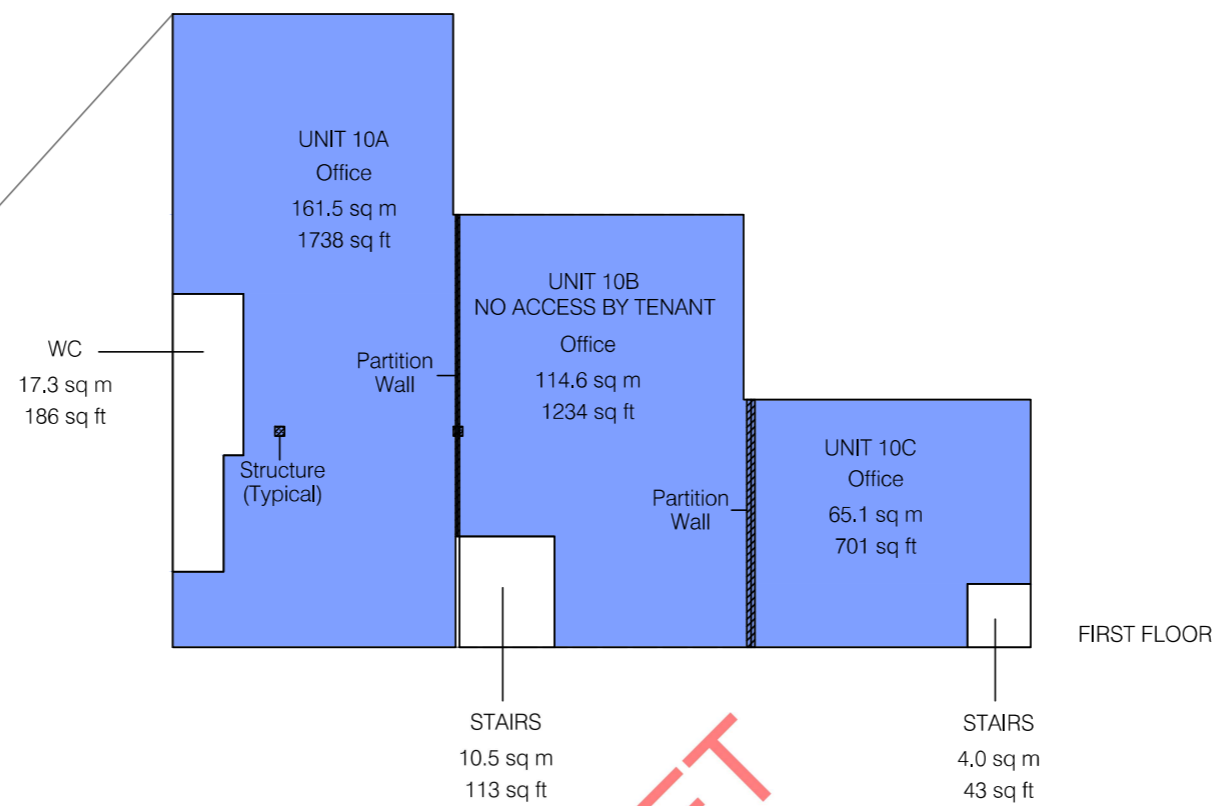
Ramp	8.1 sq m	87 sq ft
------	----------	----------

The following are EXCLUSIONS from the IPMS 3 - OFFICE TOTAL:

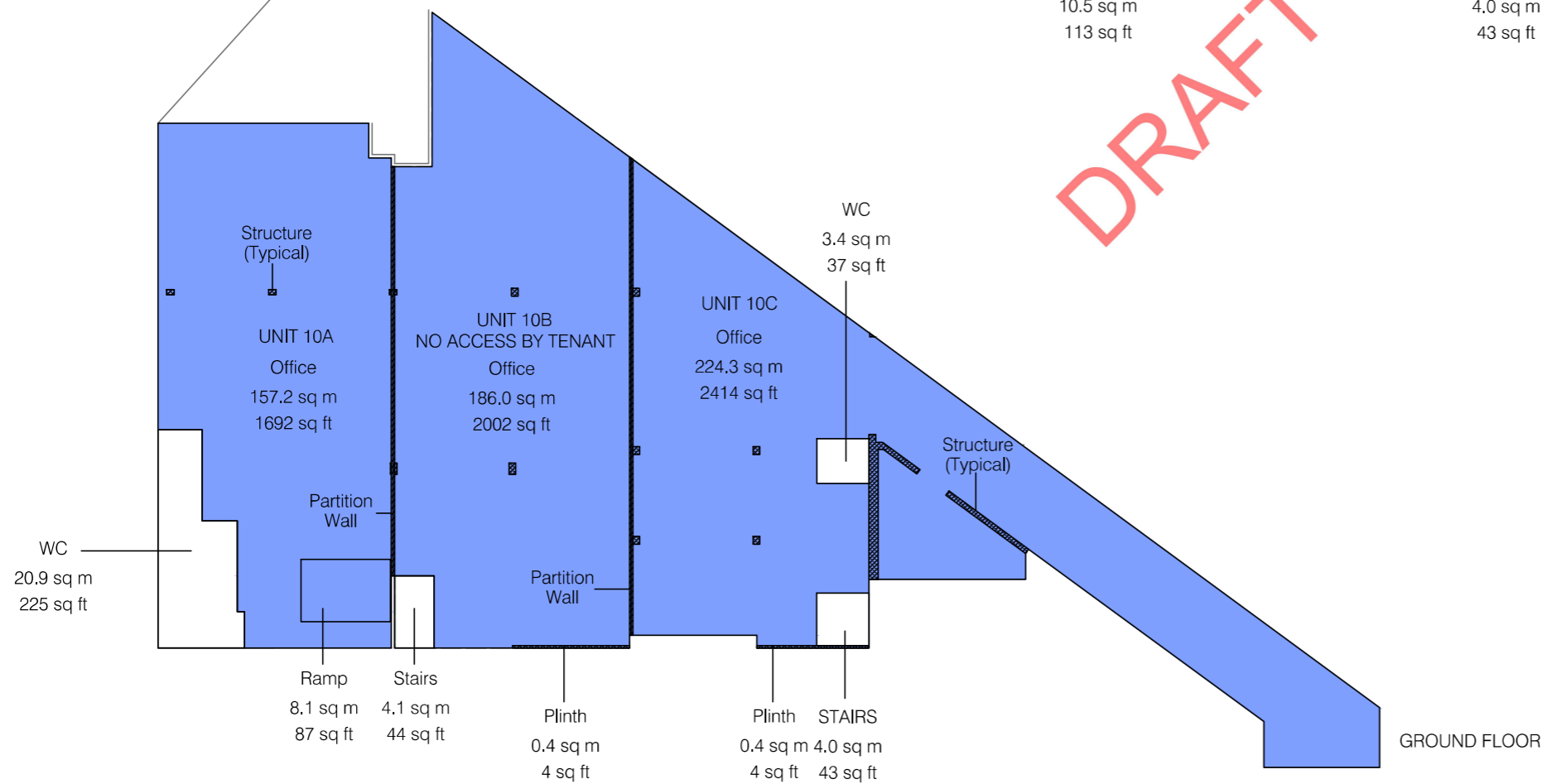
Stairs	22.6 sq m	243 sq ft
WC	41.6 sq m	448 sq ft



PARK ROYAL ROAD



DRAFT



CULLEN WAY

#### Notes:

(X.XX) - Floor to Ceiling Height (Metres)

A dashed line denotes assumed - inaccessible due to fit out.

This drawing indicates the extent of the areas quoted, produced to an accuracy commensurate with standard presentation scales. It is held in a scaled digital CAD format.

### Dwg No.LF2578-10CW-AREA-AG

Issue A

January 2020

Scaled for presentation - 1:250 @ A3

Lane & Frankham

