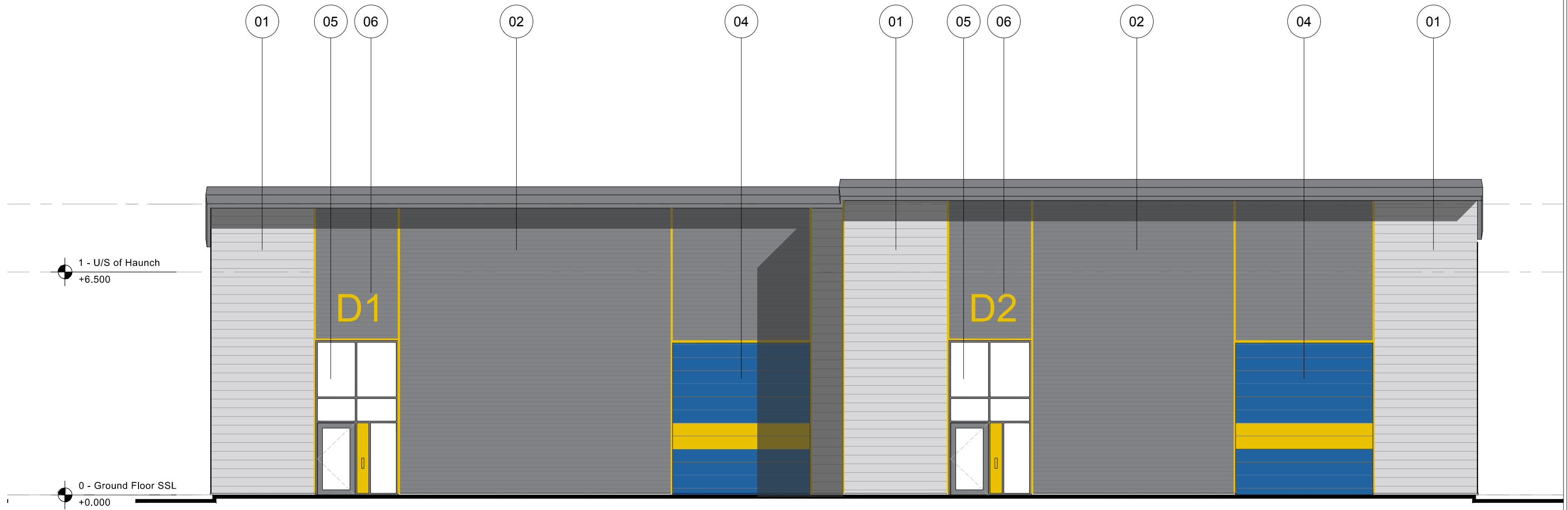
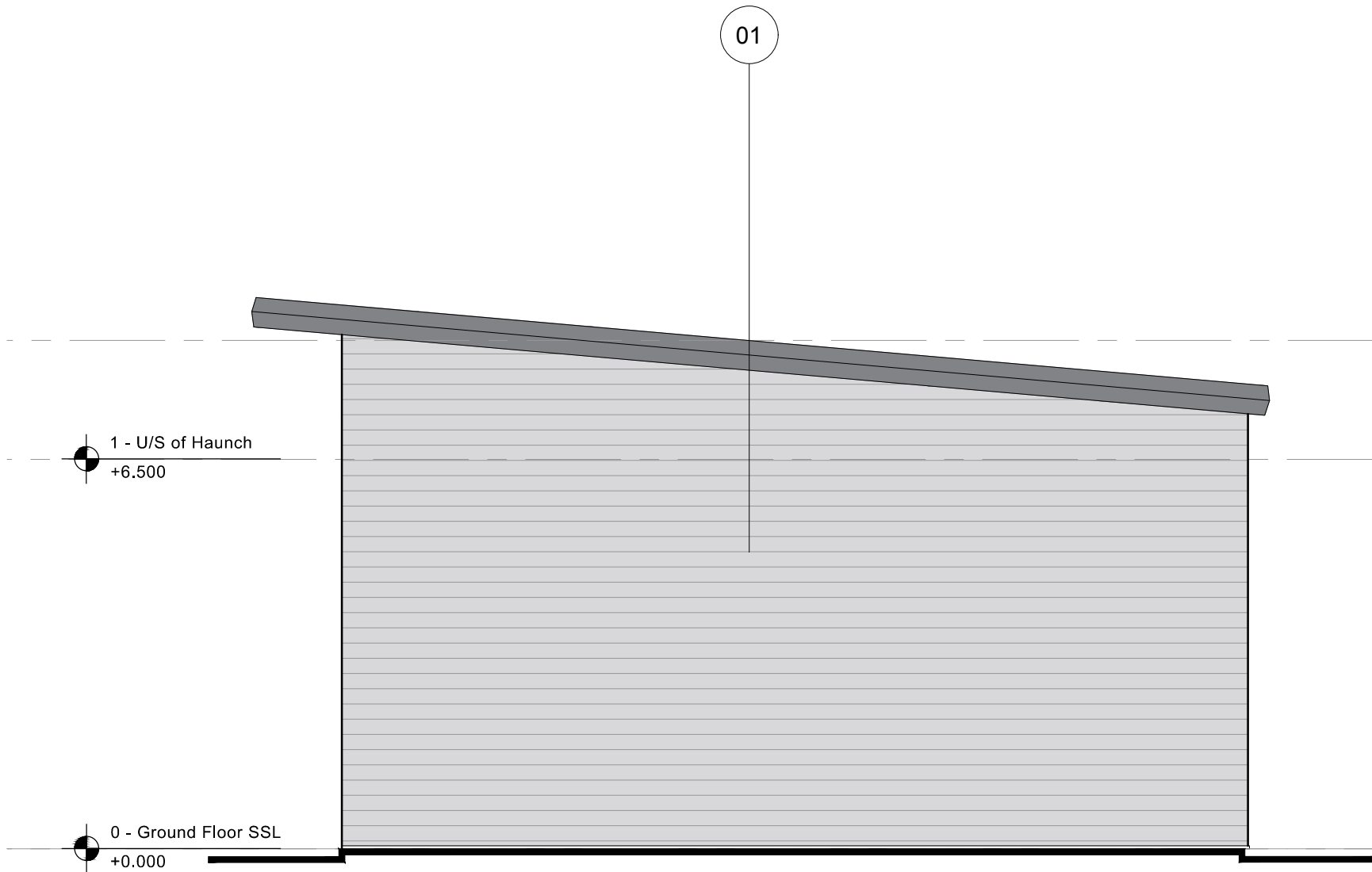


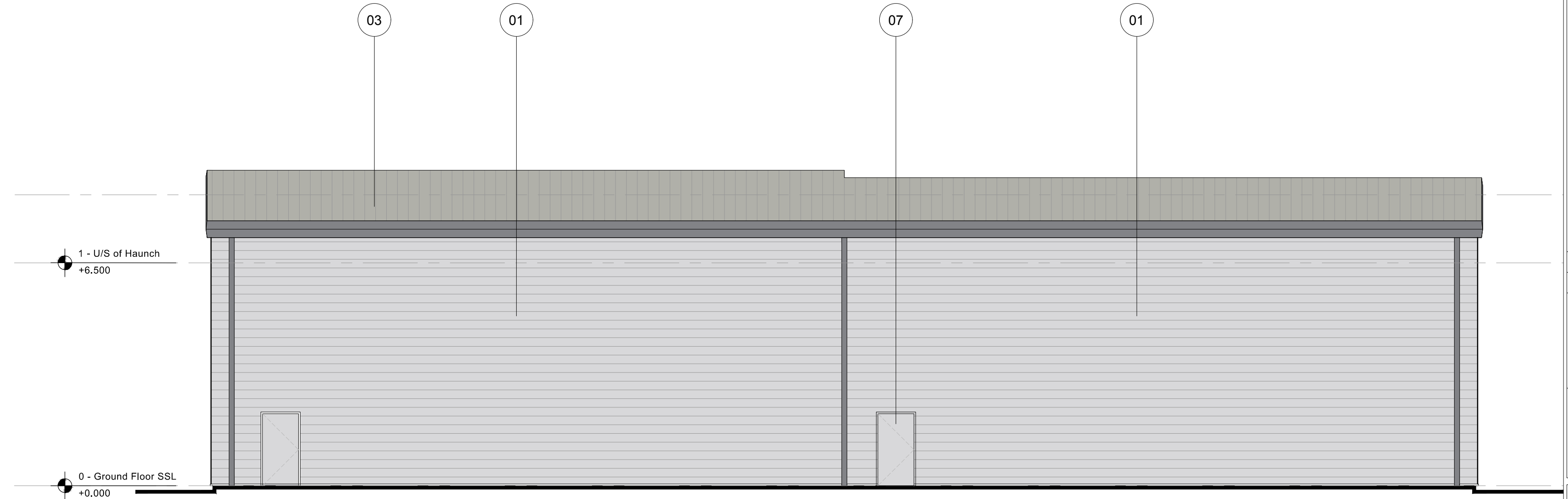
01 Proposed North East Elevation  
1:100 @ A1



02 Proposed North West Elevation  
1:100 @ A1



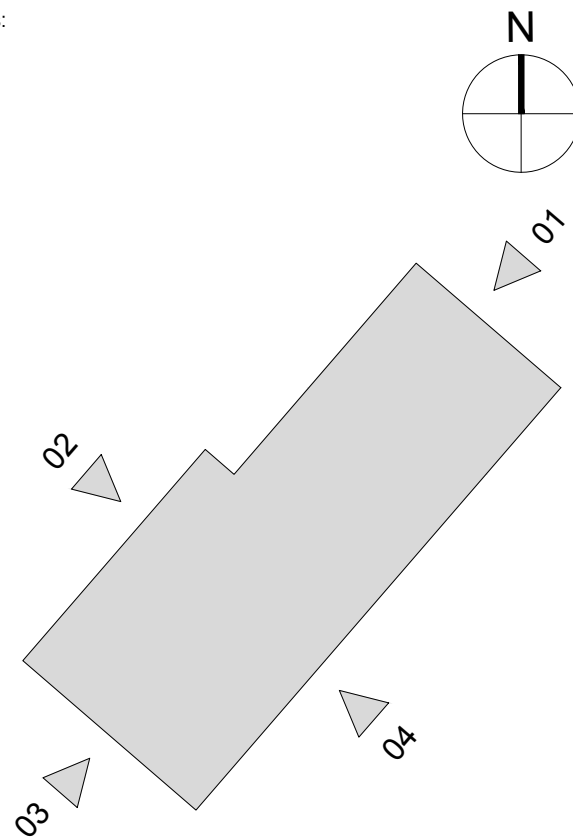
03 Proposed South West Elevation  
1:100 @ A1



04 Proposed South East Elevation  
1:100 @ A1

Disclaimer:

Notes:



- MATERIALS KEY:**
- 01 Wall Cladding: Horizontal profiled built up steel cladding, Euroclad Elite System 55 (32/ 1000 External Profile), Finish Colorcoat Prisma; colour Silver (RAL 9006)
  - 02 Wall Cladding: Horizontal profiled built up steel cladding, Euroclad Elite System 57 (Sinusoidal External Profile), Finish Tata Steel Colorcoat Prisma; colour Dark Grey
  - 03 Roof Cladding: Profiled built up cladding, Euroclad Elite System 1 (32/1000 External Profile), Finish Tata Steel Colourcoat HSP200, colour Goosewing Grey (BS10A05 / RAL7038)
  - 04 Level Loading Doors, Tata Steel Colourcoat HSP200 Colour: Sargasso Blue (RAL 5003) with yellow band (BS 10E55)
  - 05 Curtain Wall Windows, PPC Aluminium Frame, Colour: RAL 7016
  - 06 High level unit numbers, Colour: Yellow (BS 10E55)
  - 07 Metal fire escape door, Colour to match adjacent cladding

Rev:	Notes:	Date:	Dwn:	Iss:
00	Issued for Planning	22.10.18	SK	HA



**hale**  
ARCHITECTURE | DESIGN MANAGEMENT  
22c Leathermarket Street, London, SE1 3HP  
Project:  
**New Units**  
**Parkfield Industrial Estate, Culvert Place**  
Drawing Title:  
**Proposed Elevations**

Project No: <b>18075</b>	Scale @ A1/A3: <b>1:100 / 1:200</b>	Revision: <b>00</b>
Drawing No: <b>18075-PL_2003</b>		