



FINSBURY PARK

City North is a brand new, award-winning development of 26,107 sq ft Grade A office space, situated above Finsbury Park Station and with an abundance of great amenities nearby.

Just 7,131 sq ft remains following successful lettings.

Already announced at City North include M&S Foodhall, Gymbox, Cineworld, Gail's, Multiple Sclerosis Society and Rosa's Thai.



Availability

from 2,697 sq ft to 7,131 sq ft

Level 1

Carriage House

4,434 sq ft

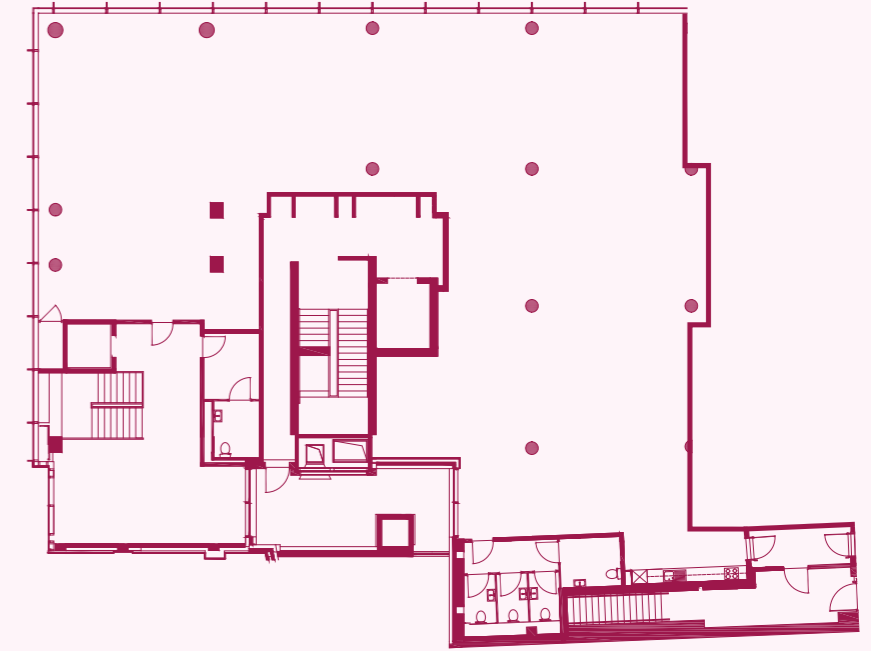
East Tower

2,697 sq ft

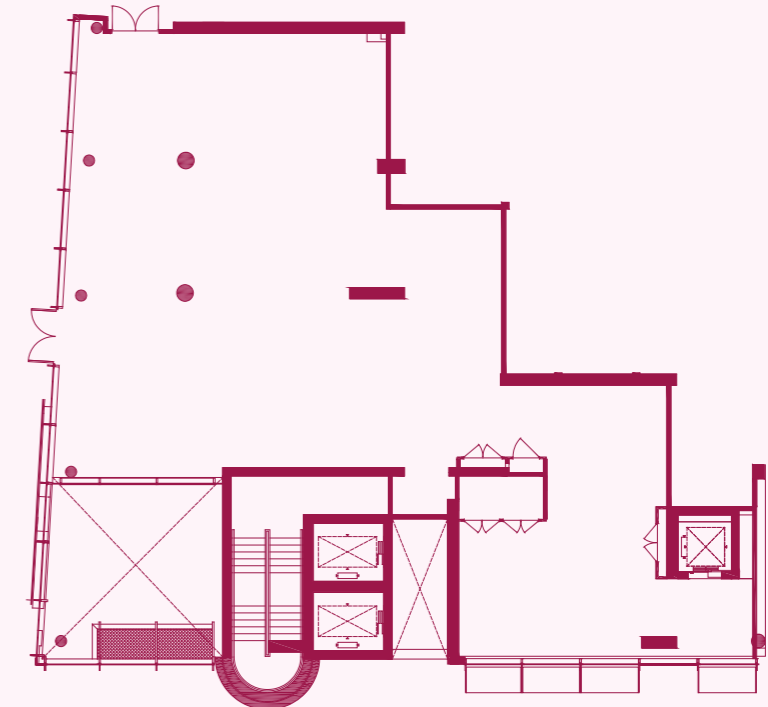
Total area

7,131 sq ft

Carriage House
4,434 sq ft

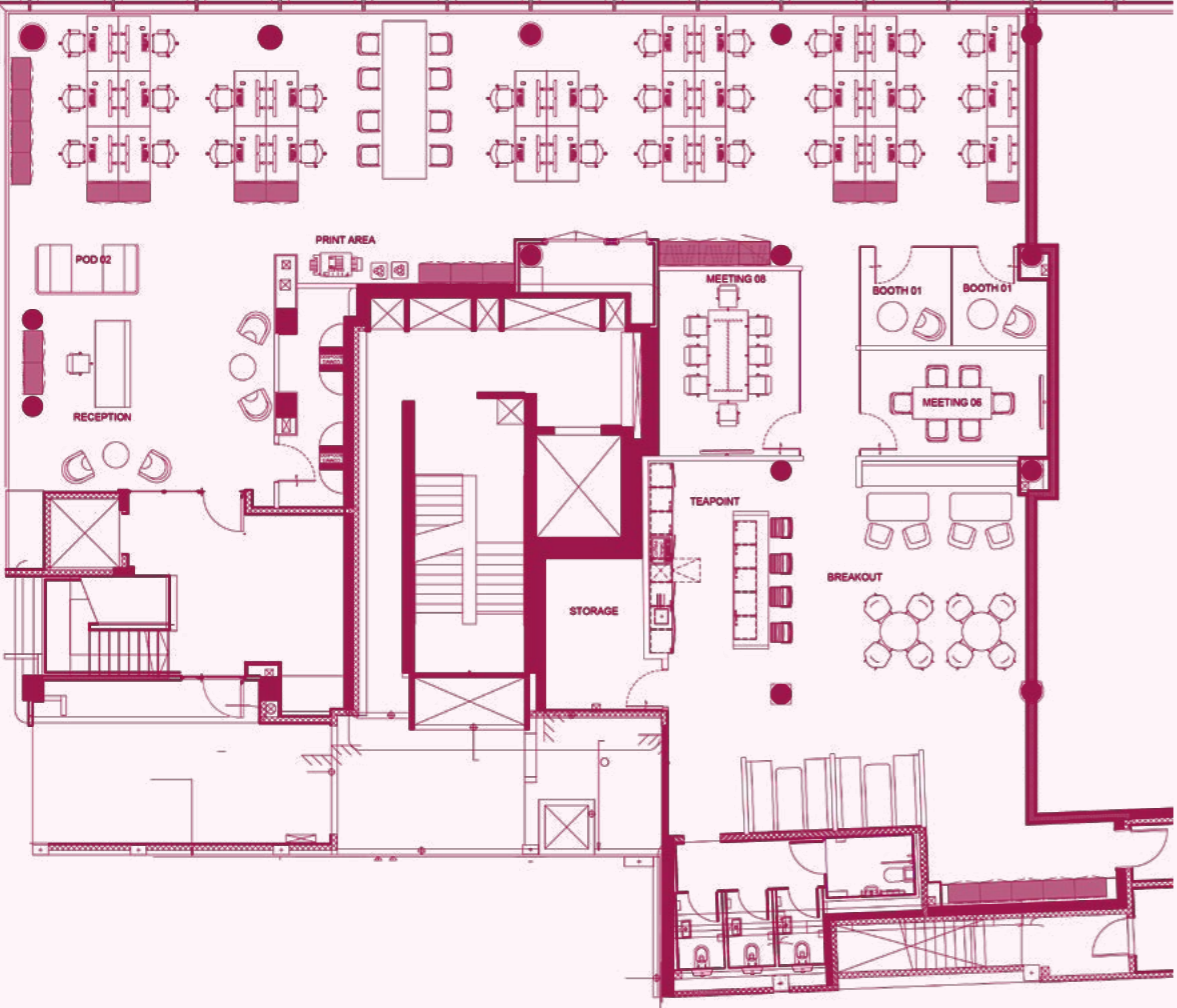


East Tower
2,697 sq ft

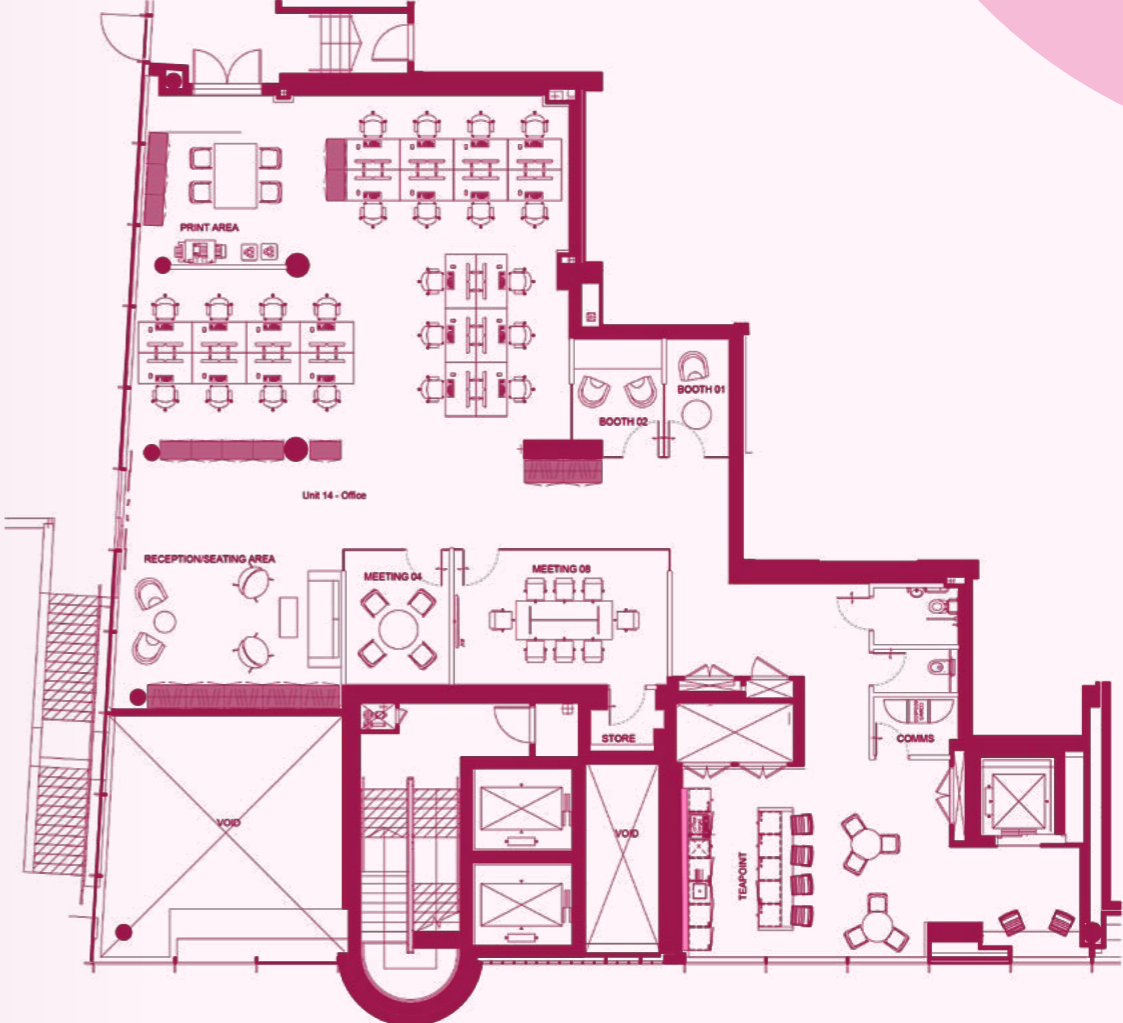


Indicative space plans

Carriage House
4,434 sq ft

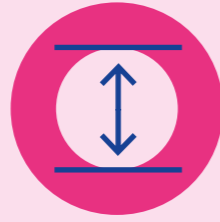


East Tower
2,697 sq ft

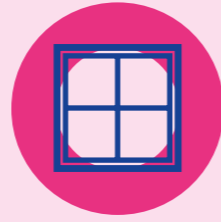


Units are currently in CAT A condition, however they can be fitted upon request.

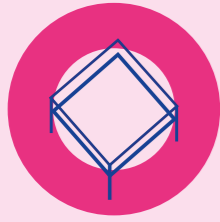
Down to specifics



3.2 metre floor to ceiling height



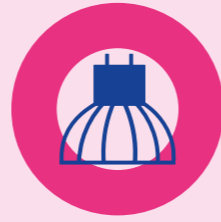
Full height glazing



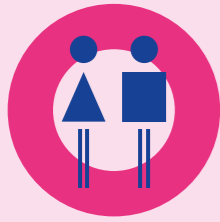
Full access raised floors



Combination of exposed services and feature mesh ceiling



Modern hanging LED lighting



Dedicated male and female WCs



Shower facilities



65 cycle parking spaces



Self-contained



Dedicated outdoor space









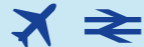


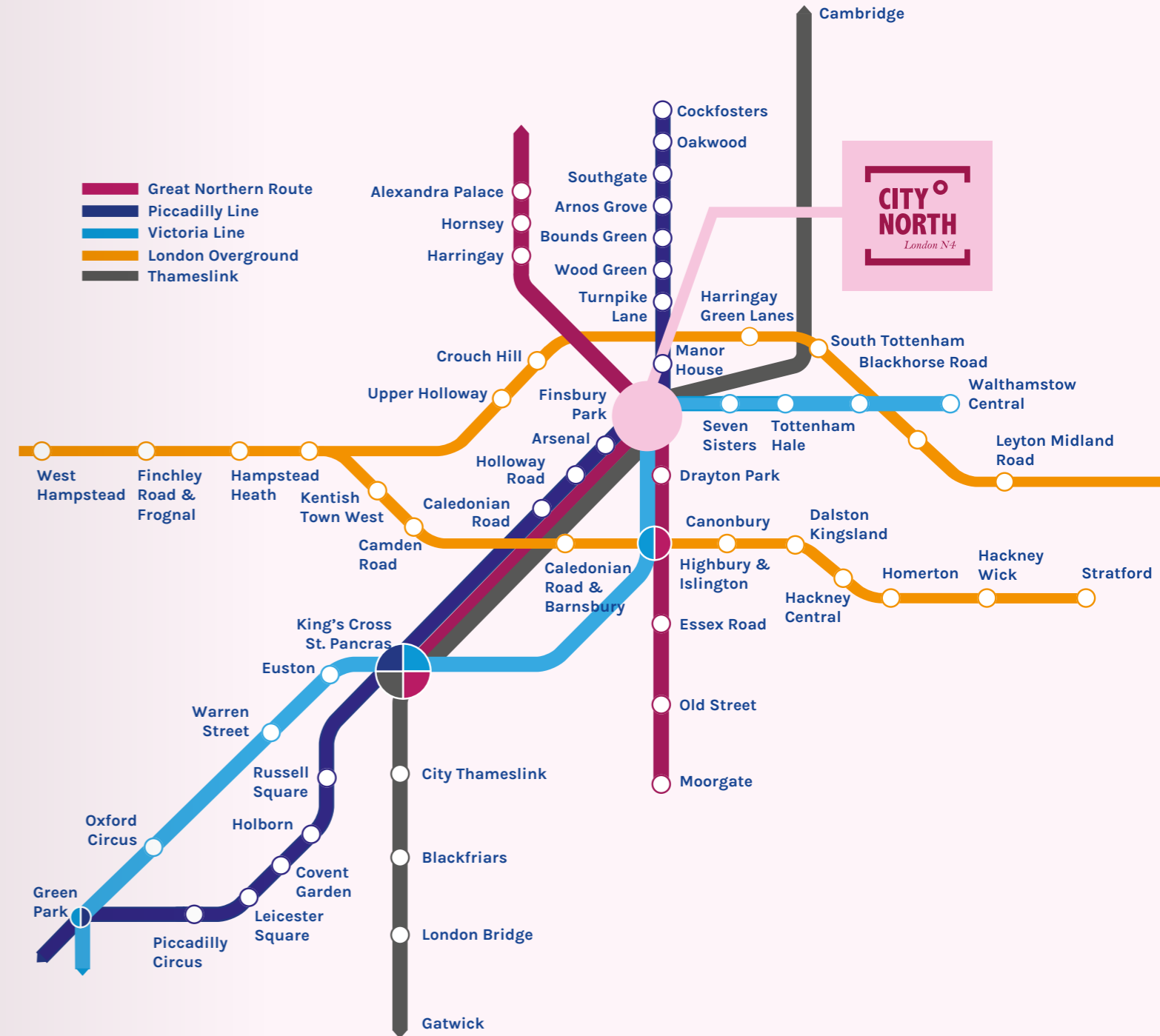
Fan coil air conditioning



Connectivity

New station entrance linking directly into the scheme.

<p>TOTTENHAM HALE</p>  <p>7</p>	<p>KING'S CROSS ST. PANCRAS</p>  <p>5</p>	<p>OXFORD CIRCUS</p>  <p>9</p>	<p>GREEN PARK</p>  <p>11</p>
<p>OLD STREET</p>  <p>14</p>	<p>VICTORIA</p>  <p>14</p>	<p>MOORGATE</p>  <p>15</p>	<p>LIVERPOOL STREET</p>  <p>17</p>
<p>WATERLOO</p>  <p>18</p>	<p>BANK</p>  <p>18</p>	<p>LONDON BRIDGE</p>  <p>19</p>	<p>STANSTED AIRPORT</p>  <p>45</p>



**For further information or to arrange an inspection
please contact our agents:**



Simon Tann

simon.tann@levyrealstate.co.uk

07748 180 198

Charles West

charles.west@eu.jll.com

07969 551 072

Samantha Jones

samantha.jones@levyrealstate.co.uk

07800 539 387

Joshua Doble

joshua.doble@eu.jll.com

07783 771 576

DISCLAIMER: Misrepresentations Act 1967: (i) Although maximum care has been taken to ensure the accuracy of the information contained within this report, such information is subject to change and confirmation. (ii) No liability will be accepted by JLL and Levy for any loss arising from information contained within this report as it may have been provided by a third party source and will require verification. (iii) This report provides a general outline only for the guidance of prospective purchasers and does not constitute the whole or any part of an offer or contract. (iv) No employee of JLL and Levy has the authority to make or give any representation or warranty or enter into any contract whatever in relation to the property. (v) Rents and prices stated within this report may be subject to VAT. October 2021.

Designed and produced by Graphicks | 020 3435 6952 | www.graphicks.co.uk